

CARTON	PACK	NO. SKU'S
12	3	24



### Fabric

55% Cotton, 45% Acrylic, 12 Gauge Knit

### Colours

Black, Navy, Charcoal,

### Sizes

XS, S, M, L, XL, 2XL, 3XL, 4XL

### Features

V-neck styling

Ribbed knit arm cuff, neckline and hem

Soft Cotton rich yarn

### Country of Origin

Bangladesh

### Carton Dimensions

60cm x 40cm x 20cm

### Carton Weight

6kg approx.

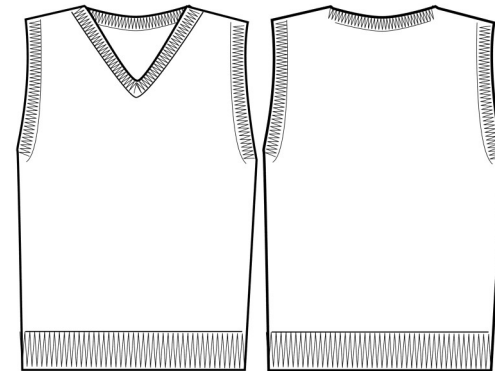
### VAT Code

6110 20 9100

## PR699

### MEN'S SLEEVELESS SWEATER

Colour	Pantone	C	M	Y	K
Black	Black	0	0	0	100
Navy	2766	100	87	0	34
Charcoal	6U	100	79	44	93



Call size	XS	S	M	L	XL	2XL	3XL	4XL
Chest to fit "	30	34	38	42	46	50	52	54
Chest to fit cm	77	87	96	107	117	126	132	138
Chest actual cm	94	100	106	112	118	124	130	136
DE,NL	36	38	40	42	44	46	48	50
FR,ES,PT,IT	44	46	48	50	52	54	56	56
Back length cm	63	65	67	69	71	73	75	77

### Marketing Description

The perfect pull-over to complete your look, this sleeveless knitted sweater has contemporary styling with a deep ribbed knitted hem to help retain shape. Wear this with a collar and tie for a professional and smart approach to your working day.

