

CARTON	PACK	NO. SKU'S
12	3	30

**Fabric**

100% Polyester plain weave. 185gsm

**Colours**

Black, Black/Hot Pink, Black/Turquoise

**Sizes**

6, 8, 10, 12, 14,16, 18, 20, 22, 24

**Features**

- Cross over neckline and asymmetric zip front
- Contrast coloured zip
- Short sleeve with vented cuff
- Side vents
- Princess seams with top stitch detail for flattering fit
- Easycare

**Country of Origin**

China

**Carton Dimensions**

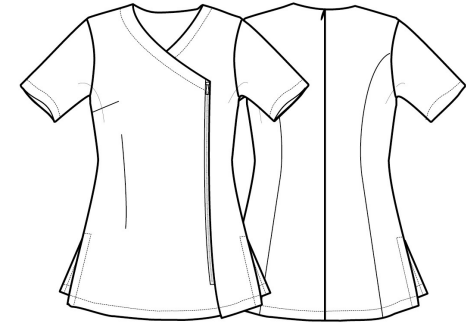
60cm x 44cm x 17cm

**Carton Weight**

6.20 kg approx.

**VAT Code**

6211 43 1000

**PR686****'CAMELLIA' BEAUTY AND SPA TUNIC**

Colour	Pantone	C	M	Y	K
Black	Black	0	0	0	100
Hot Pink	214c	0	100	24	4
Turquoise	312	89	0	11	0

Size	6	8	10	12	14	16	18	20	22	24
<b>Bust to fit "</b>	31	33	35	37	39	41	43	45	47	49
<b>Bust to fit cm</b>	79	84	89	94	99	104	109	114	119	124
<b>Call size</b>	2XS	XS	S	M	L	XL	2XL	3XL	4XL	5XL
<b>Bust actual cm</b>	89	94	99	104	109	114	120	126	132	138
<b>DE,NL</b>	34	36	38	40	42	44	46	48	50	52
<b>FR,ES,PT</b>	34	36	38	40	42	44	46	48	50	52
<b>IT</b>	38	40	42	44	46	48	50	52	54	56
<b>Back length cm</b>	70	71	72	72	73	74	75	76	77	78

**Marketing Description**

The 'Camellia' beauty and spa tunic has an understated elegance with a cross over contrast neckline and asymmetric zip front. The vented cuff on the short sleeves and the side vents ensure ease of movement whilst the princess seams with added topstitch detail create a very flattering fit.

