

PR671**LADIES' LONG SLEEVE CHEF'S JACKET**

| CARTON | PACK | NO. SKU'S |
|--------|------|-----------|
| 24 | 6 | 6 |

**Fabric**

65% Polyester, 35% Cotton Twill. 195gsm

Colours

White

Sizes

XS, S, M, L, XL, 2XL

Features

- Women's fitted chefs jacket
- Long sleeved
- Ten button hole wrap-over fastening
- Panelled back for more fitted style
- Left sleeve pen pocket
- Mandarin collar

Country of Origin

Bangladesh

Carton Dimensions

60cm x 40cm x 22cm

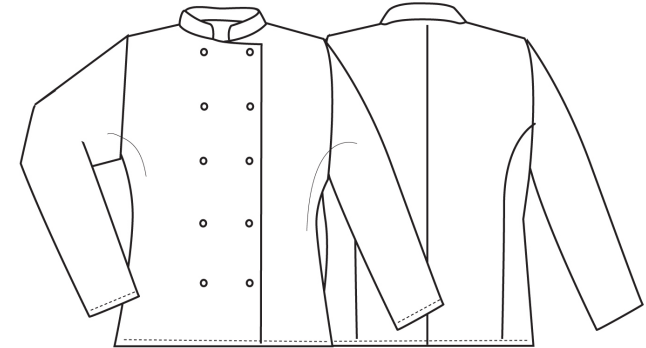
Carton Weight

8kg approx.

VAT Code

6211 43 1000

| Colour | Pantone | C | M | Y | K |
|--------|---------|---|---|---|---|
| White | White | 0 | 0 | 0 | 0 |



| Size | XS | S | M | L | XL | 2XL |
|-----------------------|----|----|-----|-----|-----|-----|
| Dress size | 8 | 10 | 12 | 14 | 16 | 18 |
| Bust to fit" | 33 | 37 | 41 | 45 | 49 | 53 |
| Bust to fit cm | 84 | 89 | 94 | 99 | 104 | 109 |
| Bust actual cm | 94 | 99 | 104 | 109 | 114 | 120 |
| DE,NL | 36 | 38 | 40 | 42 | 44 | 46 |
| FR,ES,PT | 36 | 38 | 40 | 42 | 44 | 46 |
| IT | 40 | 42 | 44 | 46 | 48 | 50 |
| Back length cm | 76 | 76 | 76 | 76 | 76 | 76 |

Marketing Description

A welcome addition to the existing Premier range of chefs wear, this long sleeved jacket is designed for women. Offering a neater fit around the waist and bust areas, this jackets is still comfortable and roomy enough to work in pressurised kitchen environments.



INDUSTRIAL LAUNDERING 85°C MAXIMUM