

PR670**LADIES' SHORT SLEEVE CHEF'S JACKET**

CARTON	PACK	NO. SKU'S
24	6	6

**Fabric**

65% Polyester, 35% Cotton Twill. 195gsm

Colours

White

Sizes

XS, S, M, L, XL, 2XL

Features

- Women's fitted chefs jacket
- Short sleeved
- Ten button hole wrap-over fastening
- Panelled back for more fitted style
- Left sleeve pen pocket
- Mandarin collar

Country of Origin

Bangladesh

Carton Dimensions

60cm x 40cm x 22cm

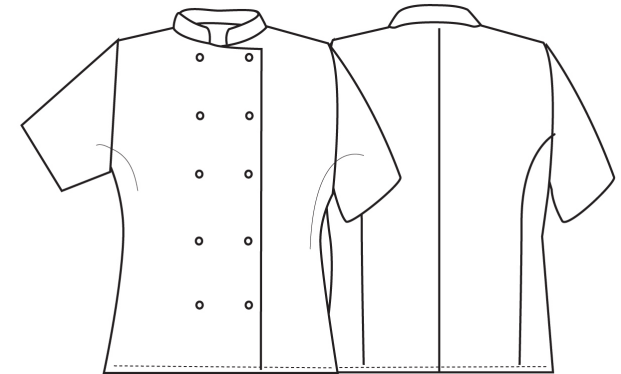
Carton Weight

8kg approx.

VAT Code

6211 43 1000

Colour	Pantone	C	M	Y	K
White	White	0	0	0	0



Size	XS	S	M	L	XL	2XL
Dress size	8	10	12	14	16	18
Bust to fit"	33	35	37	39	41	43
Bust to fit cm	84	89	94	99	104	109
Bust actual cm	94	99	104	109	114	120
DE,NL	36	38	40	42	44	46
FR,ES,PT	36	38	40	42	44	46
IT	40	42	44	46	48	50
Back length cm	76	76	76	76	76	76

Marketing Description

A welcome addition to the existing Premier range of chefs wear, this long sleeved jacket is designed for women. Offering a neater fit around the upper arm, waist and bust areas, this jackets is comfortable and roomy enough to work in pressurised kitchen environments. The left arm has a useful pen pocket.



INDUSTRIAL LAUNDERING 85°C MAXIMUM