

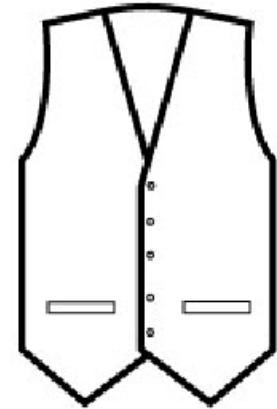
CARTON	PACK	NO. SKU'S
24	6	7



PR623

LADIES' LINED POLYESTER WAISTCOAT

Colour	Pantone	C	M	Y	K
Black	Black	0	0	0	100



Fabric

100% polyester plain weave 185gsm

Colours

Black

Sizes

2XS, XS, S, M, L, XL, 2XL

Features

- Contemporary style four button waistcoat
- Two functional watch pockets
- Satin back
- Fully lined
- Back adjusters

Country of Origin

China

Carton Dimensions

60 cmx 40cm x 22 cm

Carton Weight

10kg approx.

VAT Code

6211 43 1000

Size	2XS	XS	S	M	L	XL	2XL
Dress size	6	8	10	12	14	16	18
Bust to fit"	28	30	34	38	42	46	50
Bust to fit cm	66	76	86	96	106	116	126
Bust actual cm	71	80	88	96	104	112	120
DE,NL	30	32	36	40	44	48	52
FR,ES,PT	30	32	36	40	44	48	52
IT	34	36	40	44	48	52	56
Back length cm	55	55	55	55	55	55	55

Marketing Description

This ladies' waistcoat comes with a four button fastening down the front with two functional watch pockets to the sides. Fully lined and with a satin back, this waistcoat features a buckle so the wearer can adjust the fit.

