

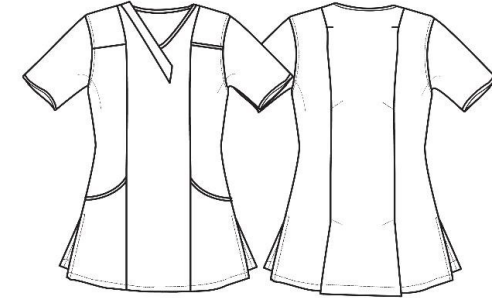
PR605**'DAISY' HEALTHCARE TUNIC**

CARTON	PACK	NO. SKU'S
24	4	36

**Fabric**

65% Polyester, 35% Cotton Twill. 195gsm

Colour	Pantone	C	M	Y	K
Lilac	264	27	30	0	0
Navy	2766	100	87	0	34
Royal Blue	286	100	60	0	6
White	White	0	0	0	0

**Colours**

Lilac/White, Navy/White, Royal/White, White/Navy

Sizes

8, 10, 12, 14, 16, 18, 20, 22, 24

Features

- V-Neck with contrast trims
- Covered front zip fastening
- Covered popper fastening above zip
- Side and back pleats for fitted styling
- Curved side pockets with contrast piped edge

Country of Origin

Bangladesh

Carton Dimensions

60cm x 40cm x 20cm

Carton Weight

10.80 kg approx.

VAT Code

6211 43 1000

Size	8	10	12	14	16	18	20	22	24
Bust to fit "	33	35	37	39	41	43	45	47	49
Bust to fit cm	84	89	94	99	104	109	114	119	124
Call size	XS	S	M	L	XL	2XL	3XL	4XL	5XL
Bust actual cm	91	96	101	106	111	117	123	129	135
DE,NL	36	38	40	42	44	46	48	50	52
FR,ES,PT	36	38	40	42	44	46	48	50	52
IT	40	42	44	46	48	50	52	54	56
Back length cm	78	78.5	79	79.5	80	80.5	81	81.5	82

Marketing Description

The 'Daisy' Tunic offers a V-neck styling with contrast trimming. Designed with a feminine fit in mind, the 'Daisy' features side and back pleats and useful curved side pockets.



INDUSTRIAL LAUNDERING 85°C MAXIMUM