

CARTON	PACK	NO. SKU'S
24	6	6



Fabric

65% Polyester, 35% Cotton. 195gsm

Colours Black

Sizes XS, S, M, L, XL, 2XL

Features

- Fitted style on the lower leg
- Rear patch pocket
- Covered zip fly
- Drawcord
- Elasticated waist
- Pocket on right leg

Country of Origin China

Carton Dimensions 58cm x 38cm x 21cm

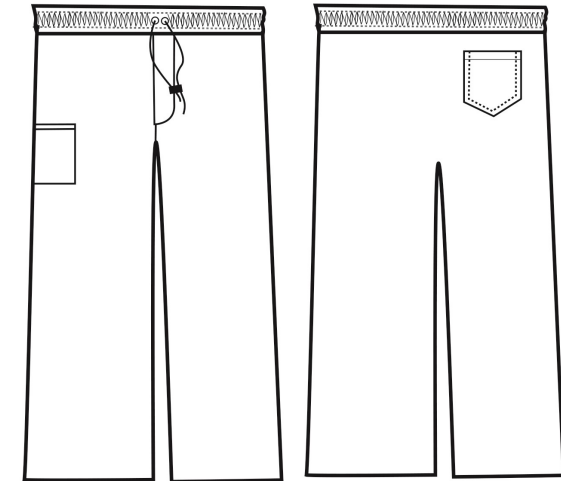
Carton Weight 12.2 kg approx.

VAT Code 6203 43 1100

PR554

CHEF'S SELECT SLIM LEG TROUSER

Colour	Pantone	C	M	Y	K
Black	Black	0	0	0	100



Size	XS	S	M	L	XL	2XL
Waist to fit "	28-30	32-34	34-36	36-38	38-40	42-44
Waist to fit cm	71-76	81-86	86-91	91-96	96-101	106-111
Waist actual cm	72	84	96	108	120	132
DE,NL	36	38	42	44	46	50
FR,ES,PT	36	38	42	44	46	50
IT	42	44	46	48	50	52

Marketing Description

A great solution for chef and the team, these trousers offer a more fitted style on the leg but still remain comfortable for long shifts during service. Features a handy pocket on the right leg and a left rear patch pocket. Fastens with zip fly and draw cord and is finished with an elasticated waist.



INDUSTRIAL LAUNDERING 85°C MAXIMUM