

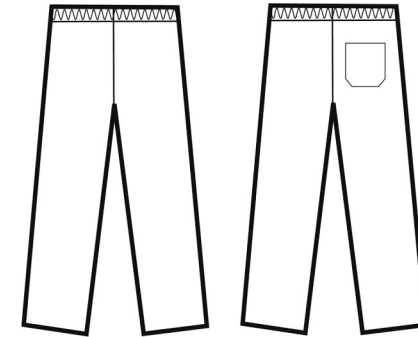
PR552

PULL ON CHEF'S TROUSER

| CARTON | PACK | NO. SKU'S |
|--------|------|-----------|
| 24 | 6 | 12 |



| Colour | Pantone | C | M | Y | K |
|--------|---------|-----|----|---|-----|
| Black | Black | 0 | 0 | 0 | 100 |
| Navy | 2766 | 100 | 87 | 0 | 34 |
| White | 0 | 0 | 0 | 0 | 0 |



Fabric

65% Polyester, 35% Cotton yarn dyed woven check. 195gsm

Colours Navy/White Check, Black/White Check

Sizes XS, S, M, L, XL, 2XL

Features

- Easycare fabric
- Elasticated waist
- Unisex sizing
- Rear patch pocket
- Zip fly
- 30.5"/77cm inside leg

Country of Origin China

Carton Dimensions 61cm x 42cm x 22cm

Carton Weight 10.30kg approx.

VAT Code 6203 43 1100

| Size | XS | S | M | L | XL | 2XL |
|------------------------|-------|-------|-------|-------|--------|---------|
| Waist to fit " | 28-30 | 32-34 | 34-36 | 36-38 | 38-40 | 42-44 |
| Waist to fit cm | 71-76 | 81-86 | 86-91 | 91-96 | 96-101 | 106-111 |
| Waist actual cm | 72 | 84 | 96 | 108 | 120 | 132 |
| DE,NL | 36 | 38 | 42 | 44 | 46 | 50 |
| FR,ES,PT | 36 | 38 | 42 | 44 | 46 | 50 |
| IT | 42 | 44 | 46 | 48 | 50 | 52 |

Marketing Description

A traditional chef's trouser available in two popular colourways. An easy-wearing comfortable pull-on style with an elasticated waist and zip fly. There is a useful rear patch pocket.



INDUSTRIAL LAUNDERING 85°C MAXIMUM