

**PR338****LADIES' COTTON RICH OXFORD STRIPES SHIRT**

SIZES	CARTON	PACK	TOTAL SKUS
XS -2XL	24	6	30

**Fabric**

60% Cotton, 40% Polyester. Crease finish. 135gsm

**Colours**

White/Oxford Blue, White/ Pink, White/Navy, White/Grey, Oxford Blue

**Sizes**

XS, S, M, L, XL, 2XL

**Features**

- Buttoned down collar on the underside
- Contrast colour to inner neckband and cuff.
- Two button cuff and single button sleeve guard
- Curved hem line
- Cotton rich fabric
- Bust and back darts for feminine fit

**Country of Origin**

Bangladesh

**Carton Dimensions**

56cm x 38cm x 16cm

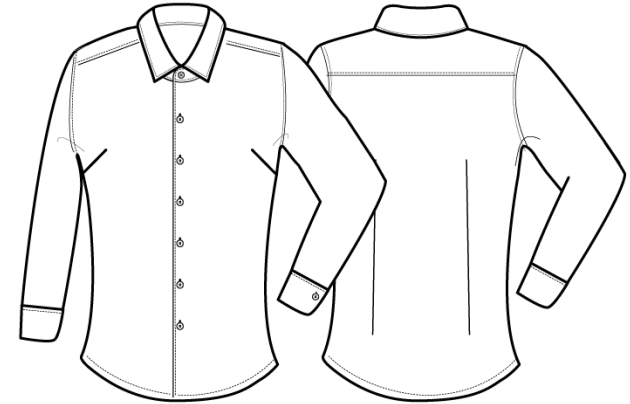
**Carton Weight**

7.5kg approx.

**VAT Code**

6205 200 090

Colour	Pantone	C	M	Y	K
Oxford Blue	7453	53	26	0	0
Grey	430c	33	18	13	40
White	White	0	0	0	0
Pink	1895	0	30	6	0
Navy	2380	91	71	36	56



Size	XS	S	M	L	XL	2XL
Dress size	8	10	12	14	16	18
Bust to fit"	33	35	37	39	41	43
Bust to fit cm	84	89	94	99	104	109
Bust actual cm	92	97	102	107	112	117
DE,NI	36	38	40	42	44	46
FR,ES,PT	36	38	40	42	44	46
IT	40	42	44	46	48	50
Back length cm	66	67	68	69	70	71

**Marketing Description**

A welcome addition to our range of Signature Oxford Shirts, this style is designed with narrow vertical stripes for a touch of high street inspiration. As you'd expect, this iconic style features the classic button-down collar on the underside with double buttons to the cuff. Choose to wear more casually with an open collar and roll-back sleeves and a flash of contrast fabric becomes visible on the inner neckband and inside cuff.



WASH DARK COLOURS SEPARATELY, WASH INSIDE OUT, DO NOT SOAK, DO NOT DRY CLEAN