

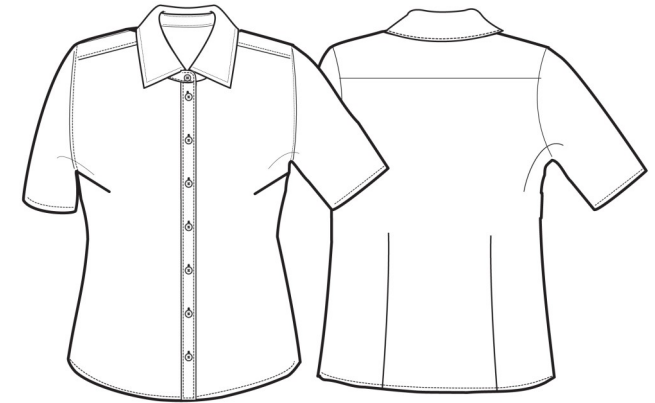
SIZES	CARTON	PACK	TOTAL SKUS
8 - 20	24	6	28
22 - 26	12	3	12



PR336

LADIES' SHORT SLEEVE SIGNATURE OXFORD BLOUSE

Colour	Pantone	C	M	Y	K
Black	Black	0	0	0	100
Light Blue	2708	3	4	9	0
Silver	428c	0	0	0	23
White	White	0	0	0	0



Fabric

70% Cotton, 30% Polyester, Cotton Rich Oxford Weave. 135gsm

Colours Black, Light Blue, Silver, White

Sizes 8, 10, 12, 14, 16, 18, 20, 22, 24, 26

Features

- Easy care blouse with wrinkle free finish
- Soft collar styling
- Rounded bottom hem
- Fitted styling with bust and back darts
- Pearlised buttons on light blue and white shirt, self colour buttons on remaining

Country of Origin Bangladesh

Carton Dimensions 55cm x 35cm x 14cm / 36cm x 28cm x 15cm

Carton Weight 10.1kg / 6kg

VAT Code 6206 30 0000

Size	8	10	12	14	16	18	20	22	24	26
Bust to fit "	33	35	37	39	41	43	45	47	49	51
Bust to fit cm	84	89	94	99	104	109	114	119	124	129
Call size	XS	S	M	L	XL	2XL	3XL	4XL	5XL	6XL
Bust actual cm	94	99	104	109	114	119	124	129	134	139
DE,NL	36	38	40	42	44	46	48	50	52	54
FR,ES,PT	36	38	40	42	44	46	48	50	52	54
IT	40	42	44	46	48	50	52	54	56	58
Back length cm	66	66.5	67	67.5	68	68.5	69	69.5	70	70.5

Marketing Description

This short sleeve ladies Oxford blouse is an essential wardrobe item during the warmer months. Bust and back darts make for a flattering fit and the soft collar styling and rounded bottom hem ensure a feminine workwear blouse for women.



WASH DARK COLOURS SEPARATELY, WASH INSIDE OUT, DO NOT SOAK, DO NOT DRY CLEAN