

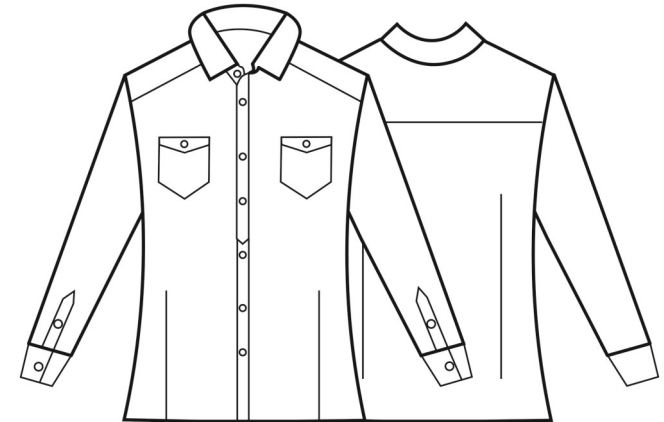
| CARTON | PACK | TOTAL SKUS |
|--------|------|------------|
| 24     | 6    | 14         |



## PR322

### LADIES' JEANS STITCH DENIM SHIRT

| Colour       | Pantone | C | M | Y | K   |
|--------------|---------|---|---|---|-----|
| Black Denim  | Black   | 0 | 0 | 0 | 100 |
| Indigo Denim | 534     | 0 | 0 | 0 | 0   |



#### Fabric

100% Cotton Ring spun Denim. 155gsm

#### Colours

Black Denim, Indigo Denim

#### Sizes

XS, S, M, L, XL, 2XL, 3XL

#### Features

- 100% Cotton Denim Shirt
- Contrast stitch details
- Two chest pockets
- Buttoned cuff and buttoned sleeve guard
- Curved hem

#### Country of Origin

Bangladesh

#### Carton Dimensions

60cm x 36cm x 19cm

#### Carton Weight

8.2kg

#### VAT Code

6206 30 0000

| Size           | XS | S  | M   | L   | XL  | 2XL | 3XL |
|----------------|----|----|-----|-----|-----|-----|-----|
| Bust to fit"   | 33 | 35 | 37  | 39  | 41  | 43  | 45  |
| Bust to fit cm | 84 | 89 | 94  | 99  | 104 | 109 | 114 |
| Bust actual cm | 92 | 97 | 102 | 107 | 112 | 117 | 122 |
| DE,NI          | 36 | 38 | 40  | 42  | 44  | 46  | 48  |
| FR,ES,PT       | 36 | 38 | 40  | 42  | 44  | 46  | 48  |
| IT             | 40 | 42 | 44  | 46  | 48  | 50  | 52  |
| Back length cm | 65 | 66 | 67  | 68  | 69  | 70  | 71  |

#### Marketing Description

Up your 9-5 game with this smart-casual denim shirt. Premier's take on this classic style sees a soft and comfortable 100% Cotton blouse with contrast stitch detail across the main seams and decorative features of the blouse. Soft collar styling leads into a seven button placket for fastening and there's a single button sleeve placket that allows you to un-do and create a cool roll-back look on the lower arm.



WASH DARK COLOURS SEPARATELY, WASH INSIDE OUT, DO NOT SOAK, DO NOT DRY CLEAN