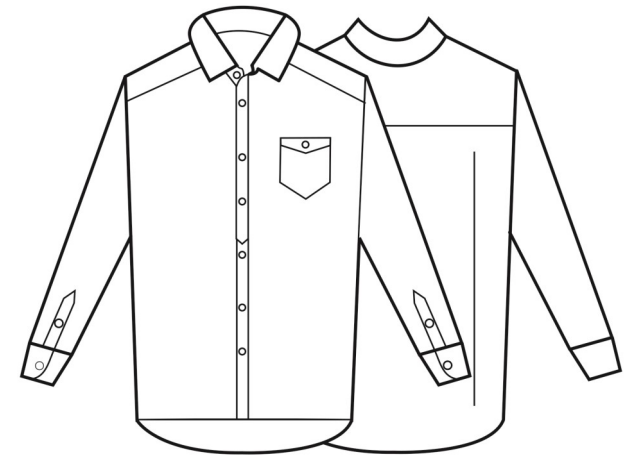


**PR222****MEN'S JEANS STITCH DENIM SHIRT**

CARTON	PACK	TOTAL SKUS
24	6	14



Colour	Pantone	C	M	Y	K
Black Denim	Black	0	0	0	100
Indigo Denim	534	95	74	7	44

**Fabric**

100% Cotton Ring Spun Denim. 155gsm

**Colours**

Black Denim, Indigo Denim

**Sizes**

XS, S, M, L, XL, 2XL, 3XL

**Features**

- 100% Cotton Denim Shirt
- Contrast stitch details
- Left breast pocket
- Buttoned cuff and buttoned sleeve guard
- Curved hem

**Country of Origin**

Bangladesh

**Carton Dimensions**

60cm x 36cm x 19cm

**Carton Weight**

7.9kg

**VAT Code**

6205 20 0090

<b>Call size</b>	XS	S	M	L	XL	2XL	3XL
<b>Collar cm</b>	36	39.5	40	42	44.5	46	48
<b>Chest to fit "</b>	30	34	38	42	46	50	54
<b>Chest to fit cm</b>	77	87	96	107	117	126	136
<b>Chest actual cm</b>	100	108	116	124	132	140	148
<b>DE,NL</b>	34	36	38-40	42	44-46	48	50
<b>FR,ES,PT</b>	34	36-38	38	38-40	42	42-44	46
<b>Back length cm</b>	79	79	80	80	81	81	82

**Marketing Description**

Up your 9-5 game with this smart-casual denim shirt. Premier's take on this classic style sees a soft and comfortable 100% cotton shirt with contrast stitch detail across the main seams and decorative features of the shirt. Soft collar styling leads into a seven button placket for fastening and there's a single button sleeve placket that allows you to un-do and create a cool roll-back look on the lower arm.



WASH DARK COLOURS SEPARATELY, WASH INSIDE OUT, DO NOT SOAK,  
DO NOT DRY CLEAN