

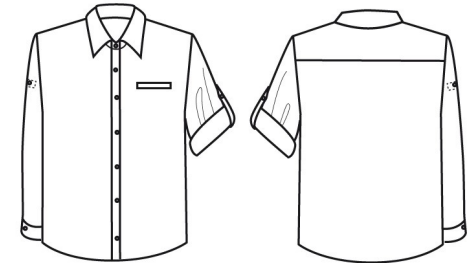
CARTON	PACK	NO. SKU'S
36	6	5

## PR206

### MEN'S ROLL SLEEVE POPLIN BAR SHIRT



Colour	Pantone	C	M	Y	K
Black	Black	0	0	0	100



#### Fabric

65% Polyester, 35% Cotton, plain Poplin weave, 105gsm

#### Colours

Black

#### Sizes

S, M, L, XL, 2XL

#### Features

- Roll up sleeve with button tab fastening
- Allowing sleeves to be neatly rolled up
- Left breast vented jet pocket
- Allows embroidery above and below pocket
- Soft collar styling
- Two button fastening for adjustable cuff

#### Country of Origin

Bangladesh

#### Carton Dimensions

58cm x 38cm x 24cm

#### Carton Weight

9.7kg

#### VAT Code

6205 30 0000

<b>Call size</b>	S	M	L	XL	2XL
<b>Collar cm</b>	37	39.5	42	44.5	47
<b>Chest to fit "</b>	34	38	42	46	50
<b>Chest to fit cm</b>	87	96	107	117	126
<b>Chest actual cm</b>	107	117	127	137	147
<b>DE,NL</b>	36	38-40	42	44-46	48
<b>FR,ES,PT</b>	36	38	40	42	44
<b>Back length cm</b>	77	77	78	78	78

#### Marketing Description

This shirt is very popular with bartenders who need to have their sleeves rolled up and fastened securely in place, ready to serve drinks. Initially a long sleeve shirt, the sleeve can be rolled up and fastened with a tab and button on the upper arm.



WASH DARK COLOURS SEPARATELY, WASH INSIDE OUT, DO NOT SOAK,  
DO NOT DRY CLEAN