

# B&C HIGHLANDER+ - FU 704

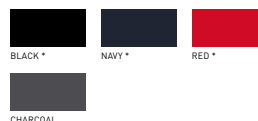
## RAW FLEECE



B&C  
COLLECTION

### OUTER WEAR /UNIT

- Tone-on-tone 1/4-zip opening with zip pull pockets in interlock fabric
- 2 side seam pockets
- Open hem with elasticated cord, stopper and easy-to-pull rings



BLACK \*

NAVY \*

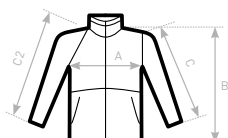
RED \*

CHARCOAL

\* COLOURS AVAILABLE IN 3XL

- 100% anti-pilling polyester fleece
- 300 g/m<sup>2</sup>
- XS - S - M - L - XL - 2XL - 3XL\*
- 5 pcs/pack & 15 pcs/carton

\* ONLY AVAILABLE IN BLACK, NAVY AND RED



C2= RAGLAN

#### SIZES [CM]

B&C HIGHLANDER+ FU 704	XS	S	M	L	XL	2XL	3XL
A HALF CHEST	50	53	56	59	62	65	68
B BODY LENGTH	68	69,5	71	72,5	74	75,5	77
C SLEEVE LENGTH	61,5	62,5	63,5	64,5	65,5	66,5	67,5

FAIR  
WEAR  
FOUNDATION